



Lezoux is a small French town with a population of 6 426. Mr Cosson has been mayor of the city since 2014.



The city hall

Next to the city hall, there's a memorial. It's mainly dedicated to the soldiers who died in the world wars. This type of monument was erected in each French town after the wars and serves to honour those who died serving their country during official ceremonies.

In our town, we can find a ceramics museum. It's dedicated to the history and art of ceramics. There is a rich collection of pottery from the Gallo-Roman era to the



present day. In the town, there are several potters and modern workshops continue to perpetuate this craft tradition, blending ancient techniques with contemporary approaches. The presence of these potters in the region helps to maintain a strong artisanal dynamic and to promote unique local skills, while attracting art



lovers and collectors.



At the Maison du Peuple, members can take part in sports activities or attend exhibitions. The music school even rehearses there.



EHPAD Mon Repos in Lezoux is a retirement home that plays an important role in the care of the elderly in the region. The establishment has a capacity of 300 beds.

The Lezoux **multimedia library** was opened in 2003. Since its creation, it has added a number of services and events, becoming a real meeting place for the community.

It's a dynamic space that plays an active role in local cultural life and continues to evolve to offer new resources and events to citizens. There's even a seed library.



The Etang de l'Île (a pond) is a pleasant spot close to Lezoux town centre, a little corner of nature that offers residents and visitors alike a place to relax, ideal for walks and outdoor activities. You can go fishing, canoeing or even climbing trees.

The Lezoux **waste centre** is a public facility where residents can manage their waste in an environmentally-friendly and responsible way. Different types of waste can be deposited there, whether household, bulky or specific (batteries, green waste, etc.), so that it can be recycled or treated appropriately. This type of facility is essential for reducing environmental impact and encouraging recycling.





There's a special feature of this waste centre : the **'Tik Bou'** refers to a specific area of the waste centre where residents can drop off items in good condition that they no longer use, but which might be of interest to others. It's a space for reuse, a sort of recycling centre. The idea is to

give a second life to objects that would otherwise be thrown away. This helps to limit waste production and encourage re-use. Visitors can pick up items left in the space (furniture, toys, clothes, household appliances, etc.), thereby contributing to a circular economy.



In our school

Restoration work has become necessary, particularly on the roofs, safety standards and thermal, sound and environmental insulation.



The school yard

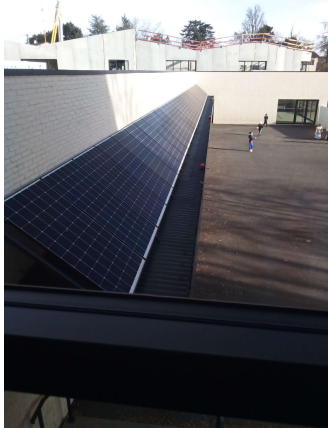
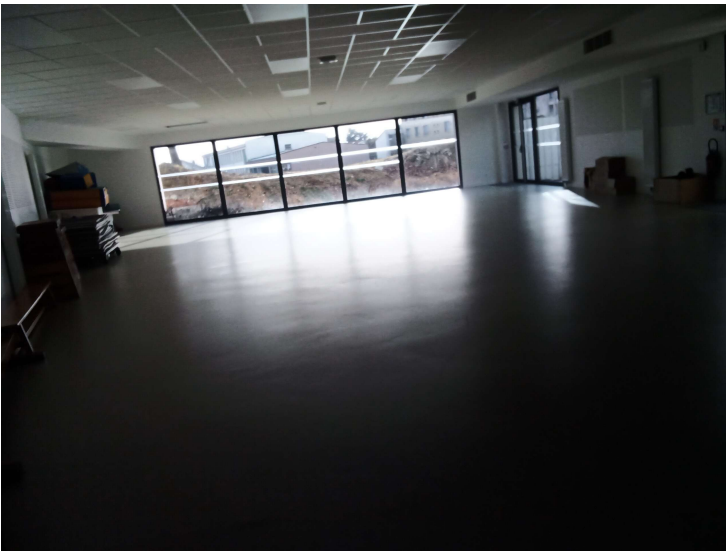
The school restaurant occupies a central position. Located between the upper and lower courtyards, it provides an architectural link, but it's also a place of learning where several generations of schoolchildren learn to become responsible citizens.

The cafeteria operates independently. We compose our own menus under supervision. Every effort will be made to limit waste production.



Our gym

The head teacher



Solar pannels for the school restaurant

Outdoor school

For the past 4 years, one class has been involved in an outdoor school project. Every Monday, the CM1 children walk to the Etang de l'Ile to learn new maths concepts in nature, for example. We went there and really enjoyed the bird trail.

